



Sensor Coating in the Transport Sector

IAA TRANSPORTATION 19.09.2024



Two Companies – One Goal

Revolutionising the Transport Market



MVI-Group

OVERVIEW

NUMBERS



1000

Employees



17

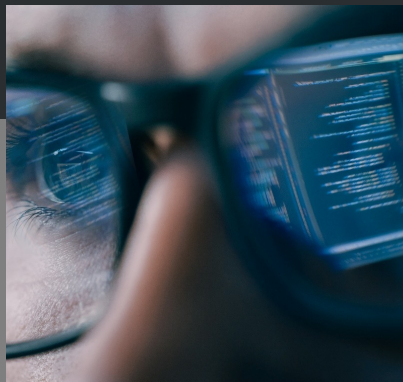
Locations



+ 50

Years of experience

SERVICES



IT &
DIGITALIZATION



DEVELOPMENT
SERVICES



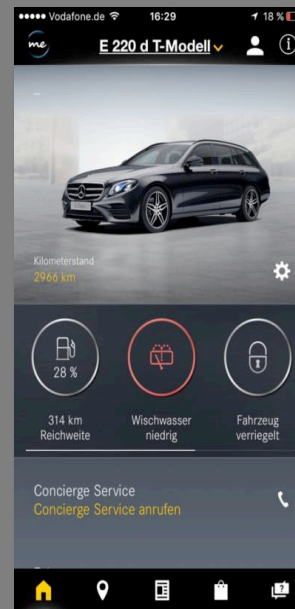
PRODUCTION &
LOGISTICS



CONSULTING
SERVICES

Starting point:

Our cars are fully digitized, but not their outer shell.



Automotive processes can be optimized with information from the outer shell!

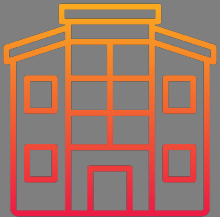
Key Facts



Born in 2019



For around 5 Years



Founded 2024



Starting point:

Better
burglary
detection for
the Transport
Industry.



Current industry best-practices cause production issues for trailer manufacturers.

Detecting defects as early as possible, because every minute counts!

Together



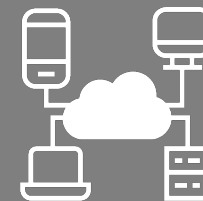
We give trucks a voice!



Sensor Coating

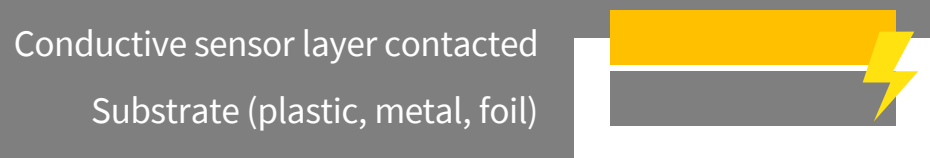
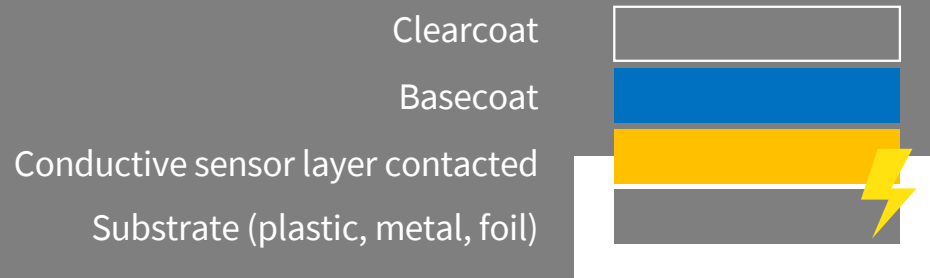


Detection of
various impulses



Smart
information

Sensor Coating



Profile

- Waterborne 2K PU system
- Concept transferable to 1K and / or solvent-borne systems
- Application: pneumatic, HR, ESTA (alternatively as a film)
- Fulfil common OEM specifications
- Very good adhesion to various substrates (plastic and metal)
- Can be integrated into common paint shops



Triggering Impulses



Detection of scratches



Detection of
dents



Detection of touches and
proximity sensing



Detection of temperature
changes



Pilot Study





CARGO CRIME MONITOR

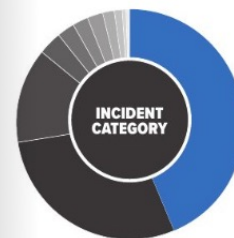
CARGO THEFT BY COUNTRY



JUNE 2024

JUNE 2024

TOP 5	
Germany	219
United Kingdom	168
Italy	157
France	107
Spain	91
Rest of EMEA	
South Africa	41
Netherlands	23
Austria	22
Russia	12
Poland	12
Belgium	11
Egypt	8
Czech Republic	8
Croatia	6
Slovakia	5
TOTAL RECORDED INCIDENTS	
	919



Theft	389 (42.33%)
Theft from Vehicle	255 (27.75%)
Theft from Facility	120 (13.06%)
Robbery	31 (3.37%)
Theft from Trailer	28 (3.05%)
Truck Theft	24 (2.61%)
Theft of Vehicle	20 (2.18%)
Theft of Trailer	19 (2.07%)
Hijacking	15 (1.63%)
Unknown	10 (1.09%)
Theft from Container	5 (0.54%)
Clandestine	2 (0.22%)
Fraud	1 (0.11%)



Approx. 400 Mio. Euro total loss within the last 12 month in EU member states!

12 incidents took place in Unclassified Parking Locations

12 Crimes in EMEA recorded a loss value of between €50,000 & €100,000, totalling €752,777

€192,959 – Average loss for all cargo crimes reported with a value

DAILY LOSS VALUE IN JUNE 2024

€707,519



€702,470

Average loss for the 28 recorded cargo thefts with a value of €100,000 or more reported to the TAPA EMEA Intelligence System (TIS) in June 2024.

€4,000,000

The biggest loss reported to TIS during this month was the theft of luxury watches from a retail facility in Monaco on 3 June.

919

Number of new cargo crimes reported to the TIS database in June 2024.

MODUS OPERANDI USED IN LATEST CARGO THEFTS:

Intrusion	470	51.14%
Unknown	365	39.72%
Violent & Threat with Violence	36	3.92%
Internal	32	3.48%
Deceptive Pick Up	8	0.87%
Deception Other	6	0.65%
Theft from Moving Vehicle	2	0.22%

20

Number of TAPA TIS product categories recording losses in June 2024.

TIS
TAPA EMEA INTELLIGENCE SYSTEM



Detecting vehicle damages



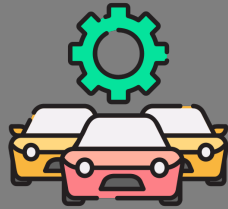
Company A
Trailer



Handed over to 3rd Party for a trip

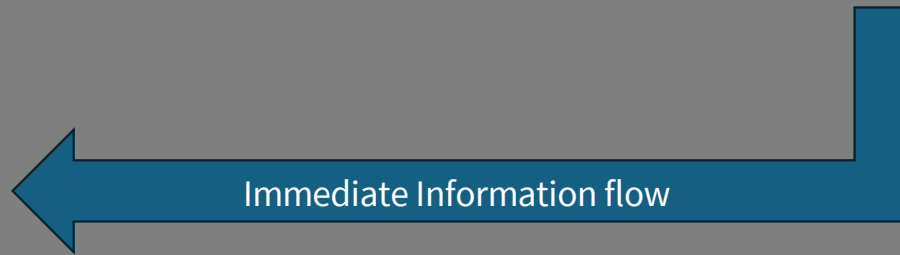


Detection of
scratch



Fleet
Department

Immediate Information flow



Telematic and OEM connection



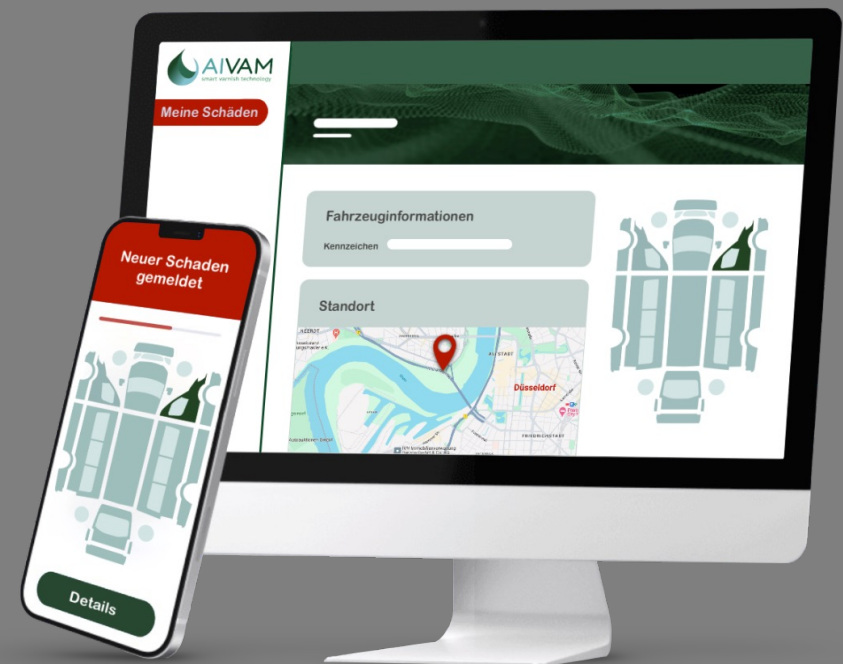
- Secured non-open AI-Varnish for highest security and best detection
- Hardware connection inside vehicle to OEM partner telematic
 - Only heavy damages / changes to minimize fail alerts
 - Different connection possibilities
- Own stand-alone communication and locating module available
 - Damages with time and location stamp via API to OEM partner



Damage Management Portal



- Real time damage report and overview
- Combined with OEM telematic data exact link to transport tours
- Push notification on heavy damages, maintenance dates and other relevant situations
- Statistics and reports with 3rd-party access



THANK YOU!



Marius Krause

Managing Director MVI AUTOMOTIVE
marius.krause@automotive-mvi.com



Dr. Stefan Mittermeier

Head of Business Development
stefan.mittermeier@automotive-mvi.com



Jan van Well

Co-Founder AIVAM
contact@aivam.de



Marc Melzner

Co-Founder AIVAM
contact@aivam.de

Contact us



Please contact us using the QR-Code